

**SUPERIOR TRAMWAY CO, INC.**

P.O. BOX 18066 SPOKANE, WA 99228

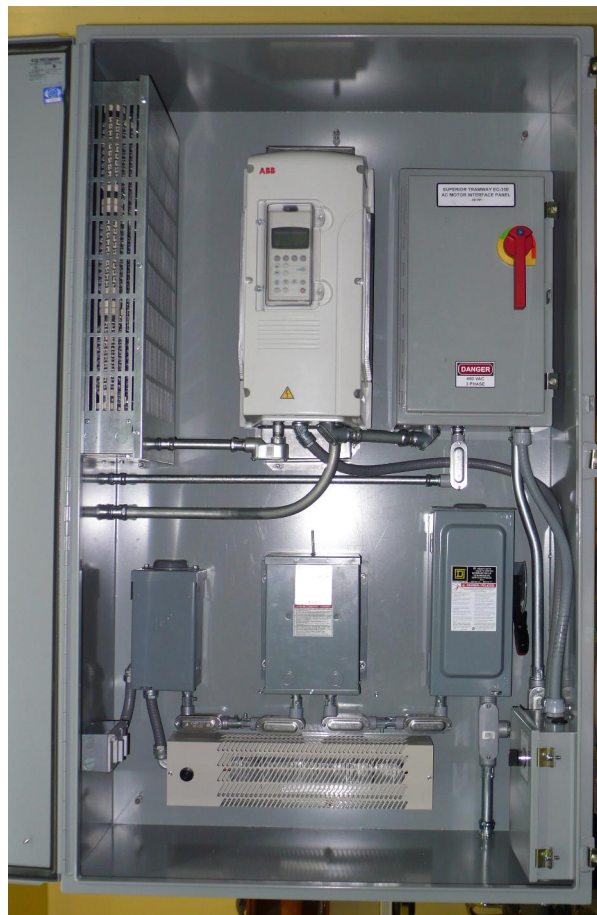
(509) 483-6181 FAX (509) 483-0948

E-MAIL: AERSUPTRM@AOL.COM

## **Electrical Control Systems: EC-17** Control Cabinet

### **FEATURES**

- 1) Meets all requirements of ANSI B77.1-2006.
- 2) All components pre-wired.
- 3) Includes vented ABB drive module.
- 4) Fused disconnect switch & speed control pot.
- 5) Self-contained heater & light system w/ AC outlets.
- 6) UL 508A listed unit.



Shown for rope tow application.

**Quality Tramway Equipment**