

## SUPERIOR TRAMWAY CO, INC.

P.O. BOX 18066 SPOKANE, WA 99228

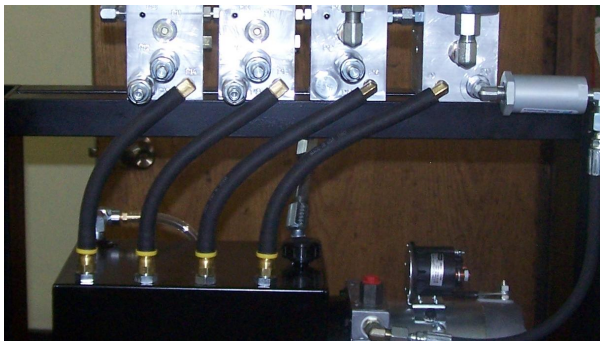
(509) 483-6181 FAX (509) 483-0948

E-MAIL: AERSUPTRM@AOL.COM

### Brake Pump Unit: DR-63

#### FEATURES

- 1) One pump unit can operate multiple brakes with different operating pressures.
- 2) Operates from 150 to 2,500 PSI.
- 3) Pressure switches available for brake interlocks.
- 4) Solenoid valves 12V or 24V DC.
- 5) Industry standard cartridge valves.
- 6) Pump voltage 12VDC, 24VDC, or 110V AC.
- 7) Gauges and flow controls for each brake.
- 8) Accumulators for long pump life and adjusting brake set rates.
- 9) Hand pump for manual brake release.
- 10) High capacity oil tank with sight tube for oil level verification.
- 11) Individual return lines for each manifold block.



*Manifold Block Return Lines (Top)  
DR-63 Pump Unit 12-Volt Shown (Right)  
Close Up Of Manifold Blocks (Bottom)*



Quality Tramway Equipment