

SUPERIOR TRAMWAY CO, INC.

P.O. BOX 18066 SPOKANE, WA 99228

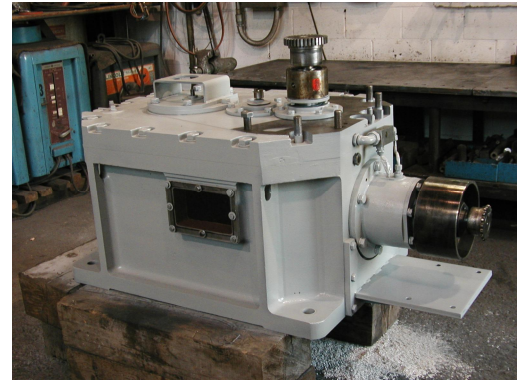
(509) 483-6181 FAX (509) 483-0948

E-MAIL: AERSUPTRM@AOL.COM

Gear Reducer Rebuilds

FEATURES

- 1) Exterior sandblasted, primed and painted.
- 2) Gearbox completely disassembled and cleaned out.
- 3) Oil system cleaned and checked for function.
- 4) All bearings and cups replaced.
- 5) Wire edge removed from gear teeth.
- 6) All gears magnafluxed.
- 7) All gears blued and run in for pattern check.
- 8) All shafts shimmed for end play and back lash.
- 9) New seals installed.
- 10) O-ring backed Plexiglas inspection plates installed.
- 11) Brands we have rebuilt: Caterpillar, Conedrive, Falk, Westinghouse and Western Gear.



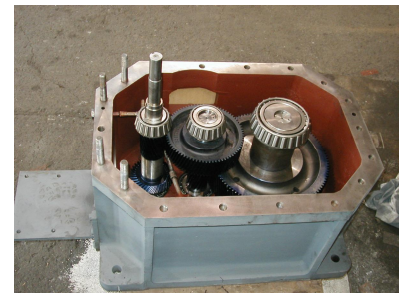
Rebuilt Gear Reducer



Reducer before rebuild.



Cleaned out and cups installed.



Gearing reinstalled.

Quality Tramway Equipment